

cuTex®

MANUAL LABEL CUTTER

TLC-731



TAEWOO CO., LTD

How to operate Label Folder (TLC-731)



1. Usage

To fold an woven label or a ribbon tape by manual and heat.

2. How to use

- Turn on the power switch. Then the nichrome wire will heat in red.
- Holding the label with both hands, cut the label "near to far" or "far to near" diagonally. It will work neatly.
- Do not cut the label "up to down" (↓) vertically.
- Use the machine with putting on gloves for safety.

3. Special feature

- It protects workman from the poisonous gas with attached a fan.
- The work efficiency has been promoted with equipped the nichrome wire diagonally.

4. Specifications

Model No.	Power Supply	Max. Cutting Width	Machine Size (Net Weight)	Packing Size (Gross Weight)
TLC-731 (Manual Label Folder)	AC110V/220V 50/60Hz	120mm	200×115×250MM (2.4kg)	260×150×290MM (3.6kg)

5. Caution

- In case that the power switch lights but the nichrome wire doesn't heat in red : Sometimes connection trouble which needs to change wiring.
- In case of no lighting both of the power switch and the nichrome wire : Circuit board trouble which needs to change it.
- In exchange of nichrome wire, install it not too tight for long use.
- Do not use other wires or copper in stead of nichrome wire because they may make the circuit board damaged or fire.
- Fuse : 250V / 0.75A

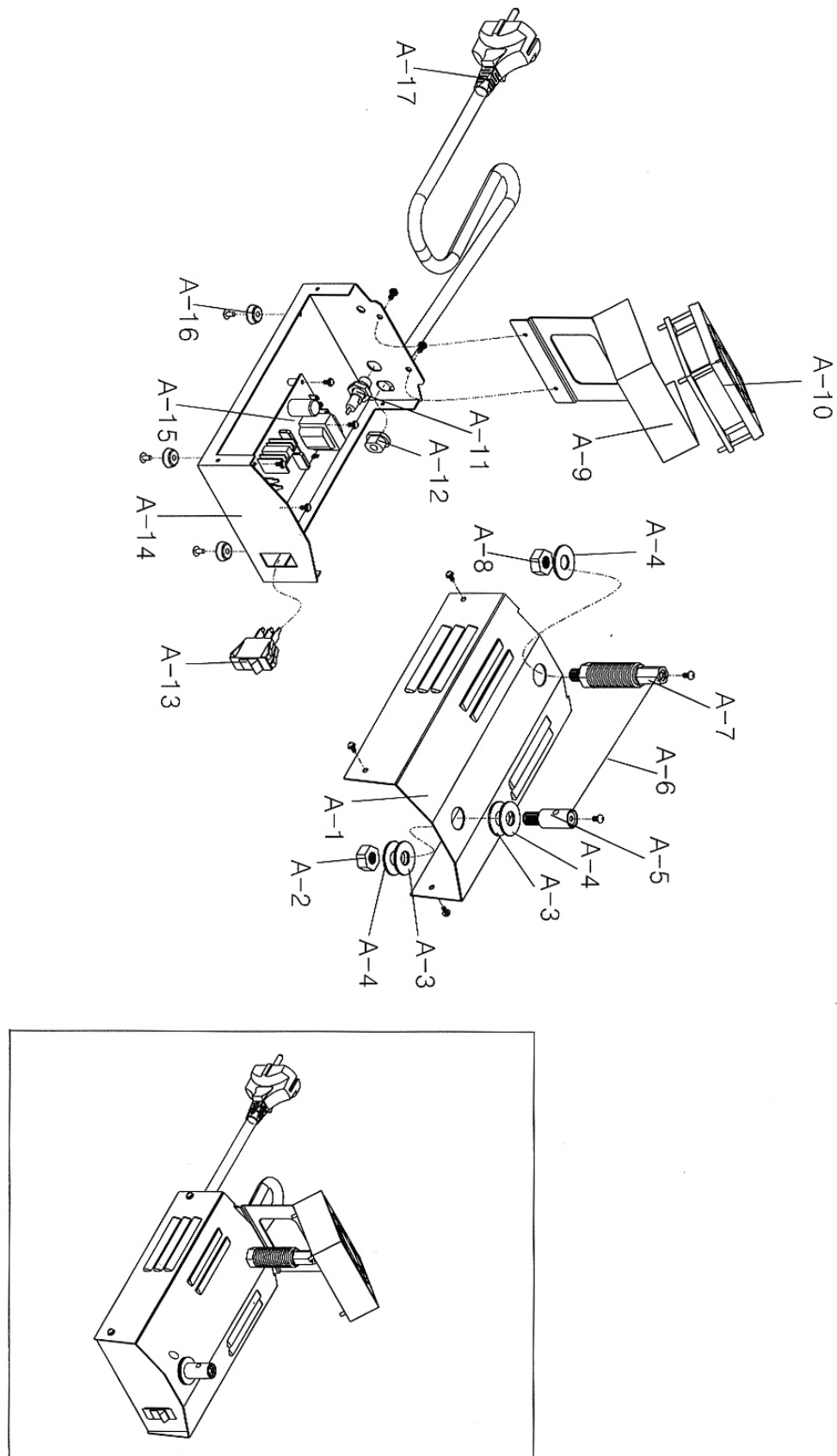
6. Customer Serves Reference :



泰友精密
TAEWOO CO., LTD.

ADDRESS : A-302, 1025-1 DOGOK-RI, WABU-EUP,
NAMYANGJOO, KYONGGI-DO, KOREA
TEL +82 31 521-6904~7
FAX +82 31 521-6908
E-mail : cutex@chol.com
www.cutex.kr

TLC-731 PART DRAWING A



TLC-731 PART LIST A

No.	Description	No.	Description
A-1	Upper Cover		
A-2	Clamping Nut		
A-3	Asbestos Washer		
A-4	Flat Washer		
A-5	Hot-Wire Clamping Bolt		
A-6	Hot-Wire		
A-7	Hot-Wire Spring Set		
A-8	Clamping Nut		
A-9	Fan Cover		
A-10	Cooling Fan		
A-11	Fuse Holder		
A-12	Cord Bush		
A-13	Power Switch		
A-14	Lower Cover		
A-15	Circuit Board		
A-16	Rubber Pad		
A-17	Power Cord		